

CERTIFICATE OF LOCATION OF GOVERNMENT CORNER

EAST QUARTER Corner of Section 12, Township 107 N, Range 41 W
5th Principal Meridian, State of Minnesota, County of MURRAY

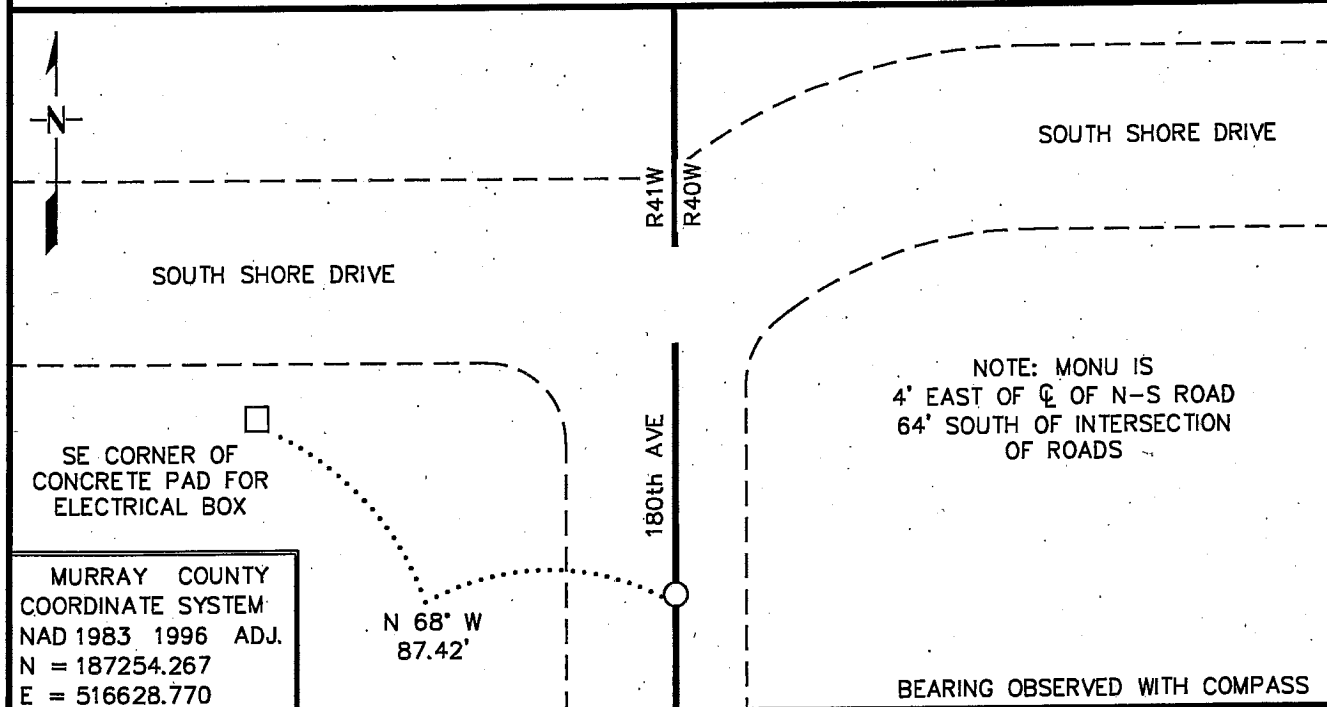
At the corner location shown on the sketch:

On _____ found a _____
DATE

left monument as found, lowered monument, removed monument (explain)

On 8/13/2008 Placed a 3/4" X 24" REBAR WITH PLASTIC CAP STAMPED
DATE

"MN DNR LS 17003". DOWN 0.3'



Statement of evidence for this corner location is on back of this page.

10/5/2009
SPK00220.00.00.01

I certify that this document was researched and prepared by me or under my direct supervision.

SIGNATURE Bruce W. Hopper DATE 10/14/09 License Number 17003

Title: Land Surveyor Professional Engineer County Surveyor County Engineer

The DNR Division of Lands and Minerals contacted the following for survey information:

Minnesota Secretary of State's Office
Murray County Recorder's Office
Murray County Highway Engineer's Office
Bueltel-Moseng Land Surveying of Marshall
Zieske Land Surveying Inc. of Windom
Madsen Land Surveying Inc. of Fairmont
Pellinen Land Surveying of Hutchinson

- 1861 U.S. General Land Office notes, obtained from the Secretary of State's Office, show the corner marked with a wood post with the following bearing trees marked:
10" W. Oak, North 9° 10' West, 526 links (347.16 feet)
15" W. Oak, North 8° 50' East, 632 links (417.12 feet)
- 1928 April 17, Surveyor's Record Book A, page 351, obtained from the County Recorder's Office, contains a survey of the east-west quarter line of Section 12, surveyor not indicated. Survey states the following about the corner:
"see sec 13 page 150"
Page 150 does not contain Section 13 but page 350 does.
- 1928 April 17, Surveyor's Record Book, obtained from the County Highway Engineer's Office, contains a survey of the east-west quarter line of Section 12, surveyor not indicated. Survey states the following about the corner:
"see sec 13 page 150"
The following is also noted:
"this may be for Sect 14-107-41 Flemming 1-30-52"
- 1938 August 12, an air photo with this date, in the possession of the DNR shows some kind of occupation lines north, south and east in the area of the corner.
- 1966 The plat of GRAND VU ACRES in Government Lot 4 of Section 12, by J.S. Richmond, LS 2129, obtained from the County Recorder's Office, shows that the east line of the plat abuts part of the east line of Section 12 but no information is given about the east quarter corner. The southeast corner of Section 12 is shown 2774 feet from the southeast corner of the plat.
- 1970 The plat of MASON-DAVIS SUBDIVISION in Government Lot 8 of Section 7, by J.S. Richmond, LS 2129, obtained from the County Recorder's Office, shows that the west line of the plat abuts the east line of GRAND VU ACRES but no information is given about the east quarter corner of Section 12/west quarter corner of Section 7.
- 1974 October 16, Surveyor's Record Book, obtained from the County Highway Engineer's Office, contains ties to Government Corners in Section 7. The following is stated about the corner:
located large flat field stone 1'-6" below existing grade at N-S fence line:
R.P. 2"x 2" hub northeast 32.25'
R.P. 2"x 2" hub southeast 32.53'

On April 12, 1976 Del Thraen and John Sorenson added the following tie to corner:
R.P. new fence post S/E 58.58

1974 October 16, Murray County Highway Department section corner information website, states that a large flat field stone was located at the corner, 1 foot 6 inches below the existing grade. The following ties are shown to the corner:
at north-south fence line
2"x 2" hub, northeast, 32.25 feet
2"x 2" hub, southeast, 32.53 feet
new fence post, southeast, 58.58 feet

1976 A page in a field notebook, obtained from Bueltel-Moseng Land Surveying, shows that an IP was found at corner. The following ties are shown to the corner:
on the center line of a north-south gravel road
in line with a field line east
N&D on west side of power pole, north, 223.90 feet
N&D on southwest side of light pole, southeast, 66.18 feet

A question mark with a circle around it is shown in the lower left hand corner of the tie page.

1981 December, a hand written statement with Willard Pellinen's business card copied thereon, from McCombs- Knutson Associates, Inc. in the possession of the DNR Division of Lands and Minerals, states that an iron pipe was found at the corner with the following ties:
on centerline gravel road, field division east
N & D in power pole, NNE; 223.90 feet

An attached sketch shows the corner:
13254.70 feet (13200.00 feet - GLO) from the northeast corner of Section 36,
T108N, R41W

2008 July 22, the DNR Division of Lands and Minerals hired a backhoe, operated by Butch Barton of B & L Excavation, Inc. of Currie, to dig for evidence of a monument at the corner. A 4 foot east-west by 10 foot north-south by 4 foot deep hole was dug, the center being:
on the center line of north- south gravel road (180th Avenue)
2640 feet north of the southeast corner of Section 12
13195 feet south of the northeast corner of Section 36

Numerous stones were found in the excavation but none of them appeared to have been set by a surveyor or mankind. The bottom and edges of the excavation were scanned with an electronic metal detector but no metal attraction was obtained.

Also, scanned the area 60 feet south of the area of the excavation (Pellinen's corner location) with an electronic metal detector but no metal attraction was obtained.

Searched for but found no evidence of the record ties.

East Quarter Corner of Section 12, Township 107 North, Range 41 West, Page 3 of 3

A detailed review of Survey Record Book A in the County Recorder's Office, shows that the east-west quarter lines of Sections 13 and 18 were surveyed, most likely for an east-west road. An existing east-west road goes thru the center of Section 14, but there is no record survey for the east-west quarter line. The 1928 survey of the east-west quarter line of Section 12 is most likely for Section 14, furthermore the east-west quarter line of Section 12 is very close to Lake Shetek and thus it may not have been a property line, thus making a survey of it useless. This is the same conclusion that Flemming made on 1-30-52 as noted in the Surveyor's Record Book in the County Highway Engineer's Office.

2008 August 13, the DNR Division of Lands and Minerals located a ½ inch iron pipe on the easterly line of GRAND VU ACRES and found it to be:
2771.57 feet from the southeast corner of Section 12

Then a position for the east quarter corner of Section 12 was computed as follows:

- a) GLO proportional measurement from the southeast corner of Section 12 to the northeast corner of Section 36
- b) on line between the southeast corner of Section 12 and the ½ inch iron pipe found on the easterly line of GRAND VU ACRES

The computed position for the east quarter corner of Section 12 was found to be:
2638.93 feet from the southeast corner of Section 12
13194.63 feet from the northeast corner of Section 36
4 feet east of the centerline of north-south road (180th Avenue)
on the easterly edge of the July 22, 2008 excavation

Analysis of the above information led the DNR Division of Lands and Minerals to conclude that the computed position for corner at the GLO proportion between the southeast corner of Section 12 and the northeast corner of Section 36 and on line on line between the plat iron and the southeast corner of Section 12 marks the obliterated location of the corner. A ¾ inch by 24 inch rebar with a plastic cap stamped "MN DNR LS 17003" was set to mark the location of the corner and ties were taken to it as shown on the sketch of reference ties.